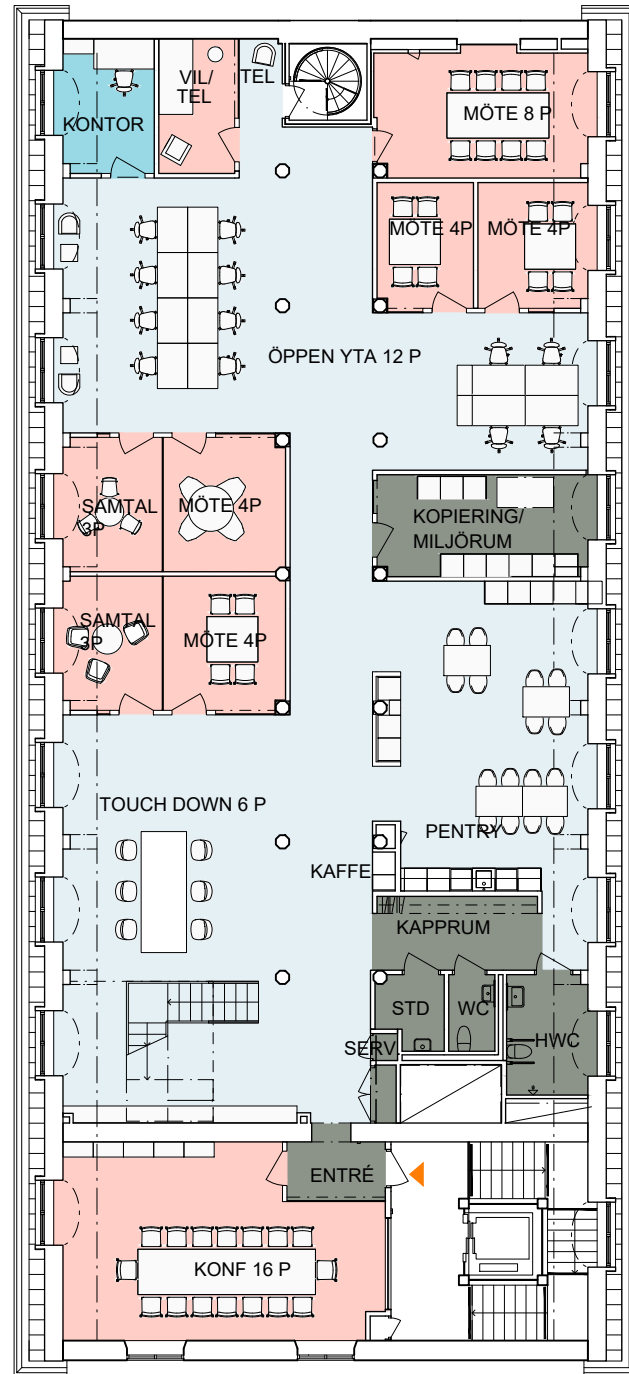
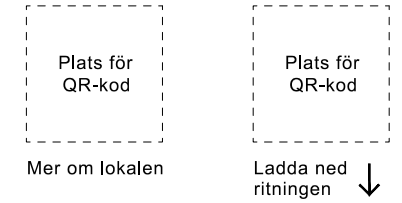


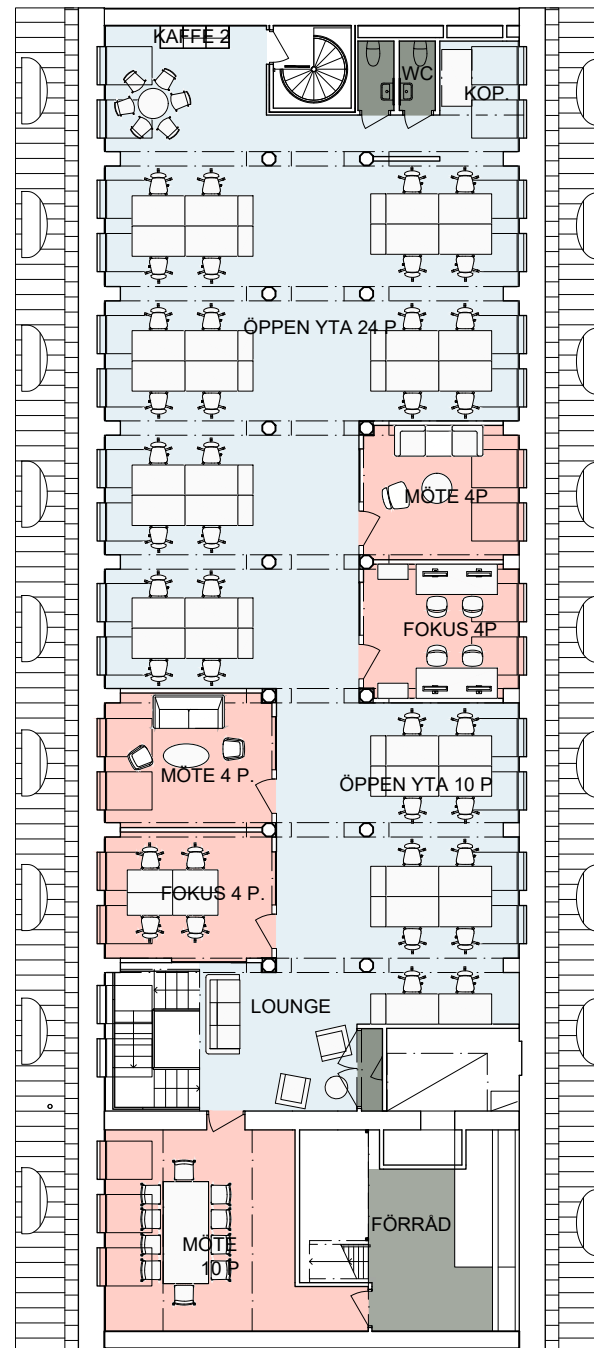
Rosenlundsgatan 31, ca 786 m²

53 st arbetsplatser i befintlig planlösning, varav 47 fasta skrivbordsplatser och 6 touch down, plan 07 och 08

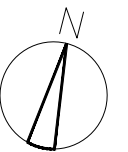
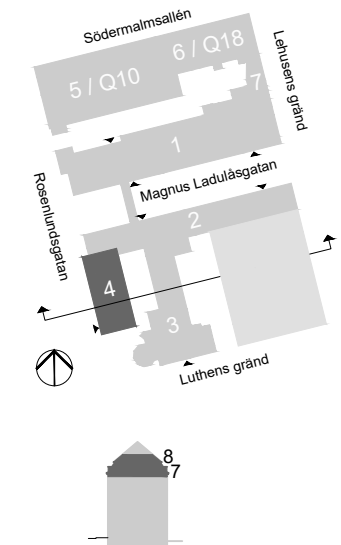
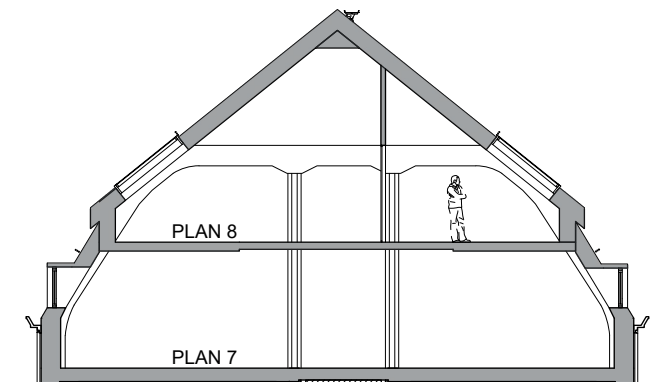
Kv Vattenpasset 11, lokal nr 4043-10701



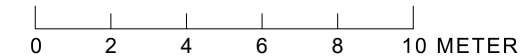
Plan 7
ca 453 m²



Plan 8
ca 333 m²



SKALA 1:200 (A3)



Arbetsplatser öppna i rum reception

52 st
1 st
- st



Övrigt mötesrum tysta rum pentry/kaffe rwc/wc

11 st
3 st
3 st
4 st



Lokalarea totalt ca 15m² ca 786 m²

AMF Fastigheter

