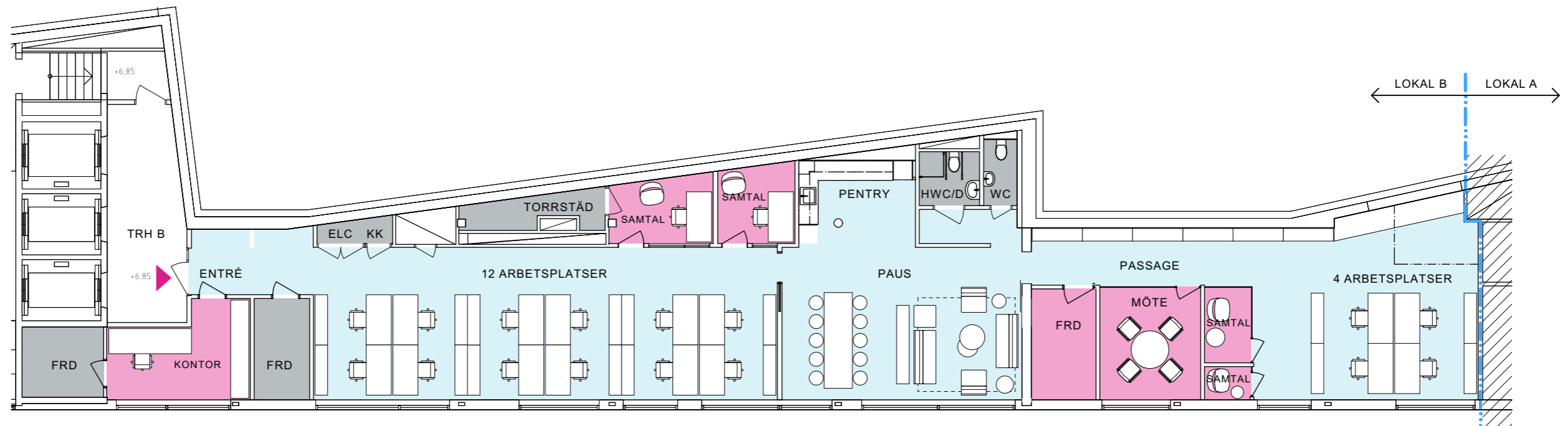
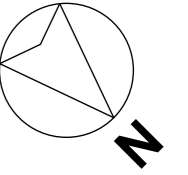
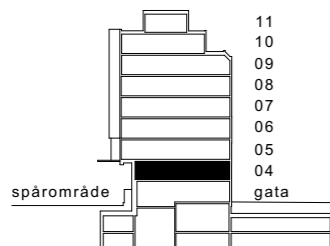


Östra Järnvägsgatan 21, 274 m²

17 st arbetsplatser i befintlig planlösning, plan 4
Kv Mentorn 1



SKALA 1:150 (A3)
0 1 2 3 4 5 10



Arbetsplatser
öppna i rum 16st
reception 1 st
0 st

Övrigt
mötesrum 1 st
samtalsrum 4 st
pentry/paus 1 st

Lokalarea
area/plats totalt 16,1 m²
274 m²